



Construction

Rollback Trailers



Construction

ROLLBACK TRAILERS

Construction

Rollback Trailers...



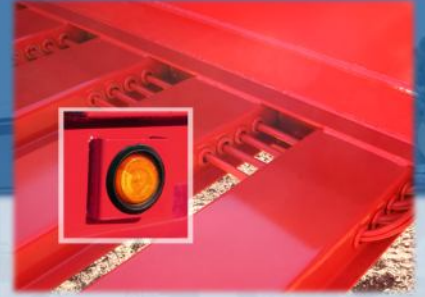
Toolbox

Covered, lockable toolbox is conveniently located at the front of the trailer and is roomy enough to store all your chains and tools.



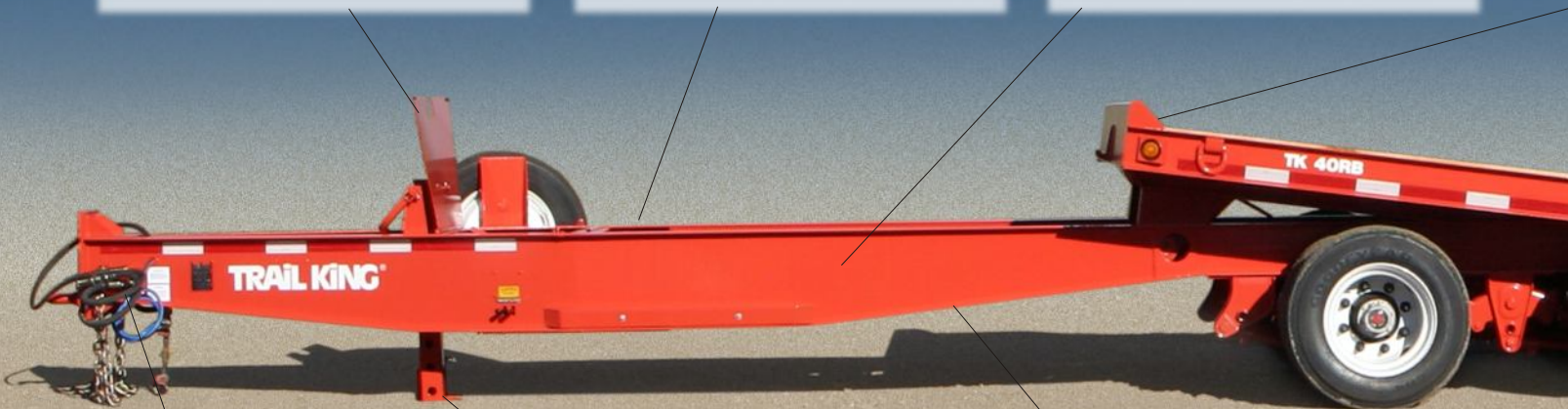
Adjustable Bed Lock

Bed lock mechanism keeps the deck from accidentally rolling back while in the transport position and, because it is adjustable, always ensures a snug, secure closure.



Protected Electrical System

Trail King rollback trailers feature rubber grommets wherever wiring runs through the frame or cross members, and rubber-mounted, shock-proof, sealed lights and for longer, trouble-free, low-maintenance performance life.



Adjustable Pintle Hitch

To accommodate a wide variety of towing vehicles, Trail King rollback trailers come with an adjustable 4-bolt pintle hitch.



Heavy Duty Jack

A 12,000-lb. heavy-duty drop-leg jack is standard equipment on all Trail King rollback models.



Roller Track

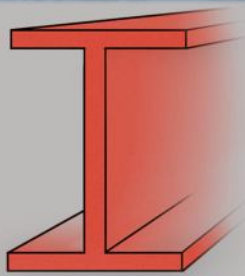
The roller track allows the deck to roll back in a smooth, even motion with no binding... even when the deck is fully loaded.

Big Trailer Advantages In A Small Trailer



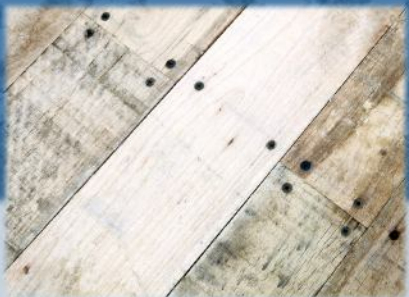
Safety Headboard

The 4" safety headboard provides an extra dimension of safety and load-hauling security.



One-Piece I-Beams

The continuous I-beam mainframe and I-beam crossmembers provide load hauling strength... and, because they are painted with two-component polyurethane primer and paint before decking is installed, the entire trailer is protected from the elements... even in places you can't see.



Oak Deck

Trail King rollback trailers are decked with oak decking, not pine, and double screwed to crossmembers to prevent cupping. As a result, your deck will stand up to years of rugged service.



Axles, Wheels, And Tires

Truck-type axles and wheels, oil seal hubs, and radial tires are standard. So you not only get the right equipment for the job, you also get less down time, easier maintenance, and long service life.



Heavy-Duty D-Rings

Trail King includes heavy-duty 6" drop forged D-rings as standard equipment... not optional, as is the case with many manufacturers... so your rollback trailer is ready to secure even your toughest loads.



Fold-Down Approach Plate

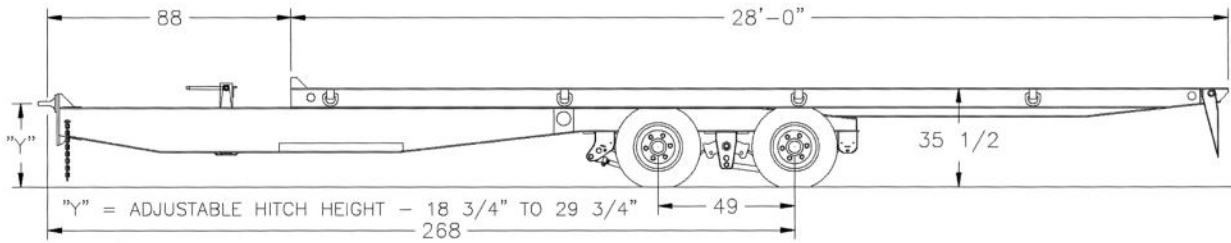
Patented tail with fold-down approach meets Federal under-ride protection requirements, achieves the lowest possible load angles, and provides extra protection for tail lights. Rollers on the underside reduce friction and wear when loading/unloading.



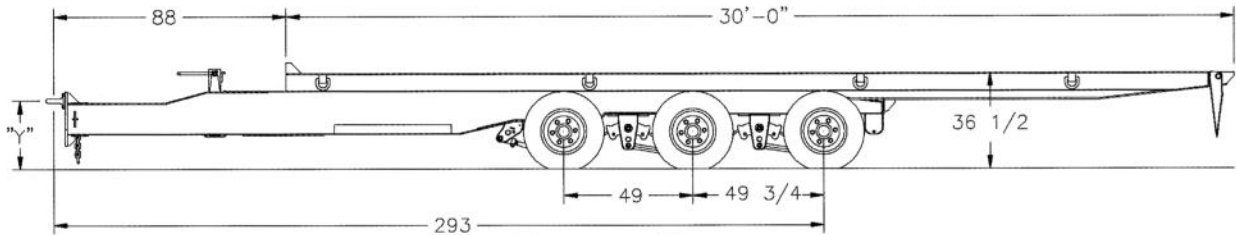
TK40RB



TK50RB



TK40RB



TK50RB

STANDARD EQUIPMENT

- 20,000 lb. axles
- 12 1/4" x 7 1/2" air Brakes
- Anti-lock brake system
- Disc wheels 8-hole pilot mount, dual rims
- Oil seals
- 4" I-beam crossmembers on 12" centers
- w/3" I-beams & formed channel on 10 1/2" centers
- Bed rolls back and tilts to achieve a 7° load angle
- PTO hydraulic tilt – standard (Self-contained unit – optional)
- 17" hydraulic fold down approach plate
- Tandem or triple axle w/multi-leaf suspension
- 8 D-Rings
- Automatic slack adjusters
- 28' deck length (TK40RB)
- 30' deck length (TK50RB)
- 35" loaded deck height (TK40RB)
- 36" loaded deck height (TK50RB)
- 7' tongue
- Adjustable 4-bolt pintle hitch
- Covered, lockable tool box
- Electrical system per DOT regulations
- Safety chains (less hooks)
- Headboard
- Red & white conspicuity markings
- Color: Trail King 2-part polyurethane

Distributed by:

*To meet 1997 Federal requirements, Trail King offers two variations of the anti-lock braking system. The minimum 2S1M system is available, but Trail King recommends the 4S2M system.

All specifications are subject to change without notice. Trailers pictured in this brochure may feature optional equipment.



TRAIL KING Industries



ROLLBACK TRAILERS