



STEEL HALF ROUND QUARTER FRAME TRAILERS



TK SHRQ

Strength, Durability, Versatility...For Any Load

Trail King's new steel half round trailer, the TKSHRQ quarter frame, is engineered to stand up to your toughest requirements.

The body shell, bulkhead and tailgate are all constructed of AR-500 or equivalent steel, with a Brinell hardness of 500 and a yield strength of approximately 250,000 PSI. That means that, while the TK SHRQ is versatile enough to handle sand, gravel and crushed stone, it also has the strength and abrasion resistance to handle shot rock, demolition, rip rap and other abrasive loads. And with several body sheet thicknesses to choose from, you can specify a trailer to match your exact hauling needs.

Other engineering features include an externally-mounted inverted hoist for ease of operation and maintenance, wide-spaced draft arms for optimum stability throughout the dump cycle, a recessed and sealed signal and tail light system for protection from the load and the elements, and an air-operated high-lift tailgate with attached flaps for maximum load clearance. In fact, no matter where you look on the Trail King SHRQ, you'll find the engineering features that make sense for your real world hauling requirements.

So contact your nearest Trail King dealer today. After all...

The tougher the load, the more you need a Trail King.



External trunnion-mounted inverted hoist is easier to service because it is out in the open where you can get at it. Also, because no dog house is required, problems with loads sticking in the dog house area are eliminated.



Main Draft Arms feature "I" beam construction with 1/2 x 2 7/8" flanges and 3/8" web. Arms measure 11" deep at the corner and taper to 4" at each end. The draft arms have a wide 76" spread at the mounting points on the center bolster.



The high-lift air-operated tailgate provides 78" of load clearance...enough to shed the largest rocks without damage to the gate. The rear flaps are mounted to the tailgate and are lifted with the gate to avoid damage by the load.

A COMPLETE LINE FOR ALL YOUR HAULING NEEDS

STEEL HALF ROUND QUARTER FRAME TRAILERS

STANDARD EQUIPMENT

CHASSIS SPECIFICATIONS:

SUSPENSION

SUB-ASSEMBLY: Constructed of 16" steel beams having 3/8" x 4" flanges and 1/4" web. The assembly has a full width 3/8" plate that ties the front of the assembly together and prevents deflection during the dump cycle.

SUSPENSION: Single point, 50M CAP., 3 leaf springs.
AXLES: 102" wide (77.5: track) "TP" type with 5/8" wall.

BRAKES: ABS 4S2M

DRUMS: 7" outboard cast drums.

HUBS: 10 stud steel, hub piloted.

WHEELS: Steel disc (8)

TIRES: 11R24.5 radials.

SECONDARY

DRAFT ARMS:

Arms are constructed of 5" x 3" x 1/4" steel tubing and have a wide 51 1/2" mounting spread. Full width 2" mounting pins are utilized for strength and reliability. The draft arms have a low mounting point on the front of the suspension sub-assembly to maintain optimum weight distribution on the suspension during the dump cycle. Inverted trunnion-mounted design. Front-mounted outside of bulkhead. Sides, center turn signal and in back plate. Driver's side front and on both sides of rear bolster.

HOIST:

LIGHTS:

STEPS:

BODY BOLSTERS:

TOP RAIL:

LANDING GEAR:

FLAPS:

Center - 12" wide, 1/4" MF-80 steel. 4" x 4" x 3/16" steel tubing. Drop leg, non-load bearing. Rubber flaps plus rubber mud guards. Flaps are attached to the tailgate and lift out of harm's way during the dump cycle. Flush over-hung high-lift hinges. Height: 45". Constructed of 1/4" AR-500 steel or equivalent. Tailgate is operated by twin air cylinders. High-lift design provides 81" of dump clearance.

TAILGATE:

GATE CONTROL:

REAR POST:

Air-operated latch (MGM air cylinder - spring close/air open). 13" wide, 3/16" MF80 steel

BODY SPECIFICATIONS:

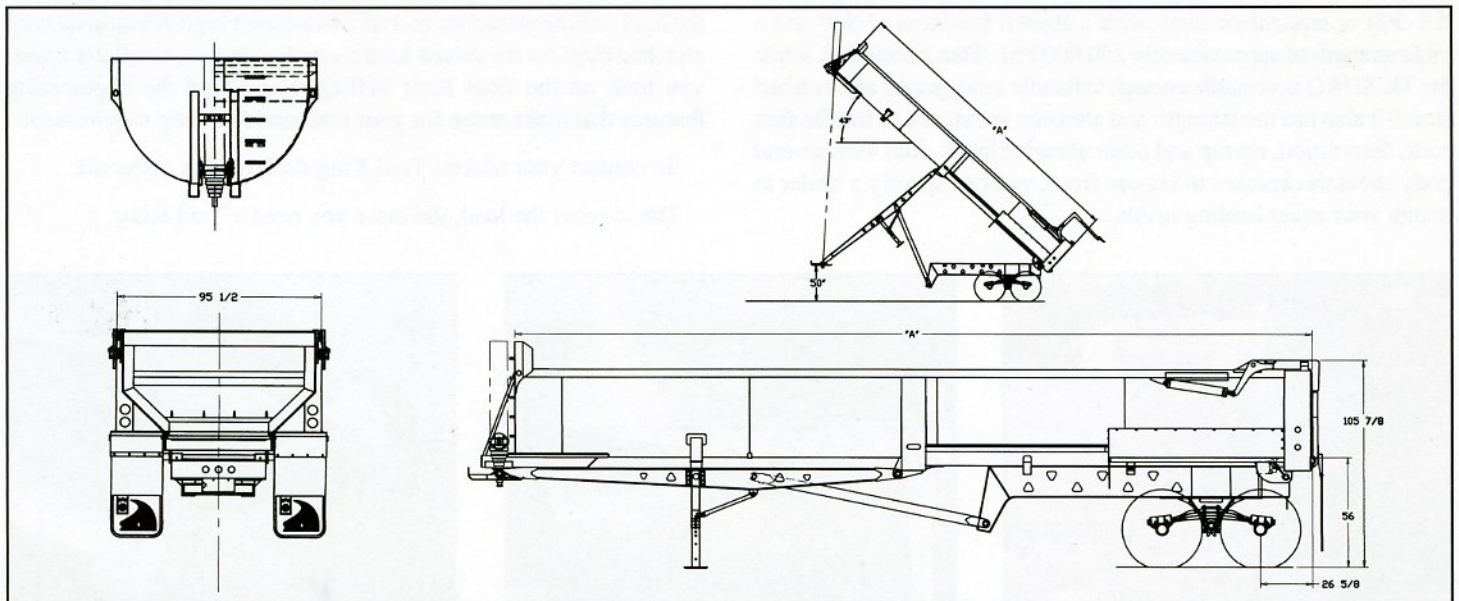
BODY LENGTH: 24' to 39'.

BODY "SHELL": 45" - Constructed of 1/4" AR-500 steel or equivalent. Available in optional thicknesses.

BULKHEAD: Constructed of 1/4" AR-500 steel or equivalent.

MAIN

DRAFT ARMS: "I" beam construction with 1/2 x 2 7/8" flanges and 3/8" web. Arms measure 11" deep at the center and taper to 4" at each end. The draft arms have a wide 76" spread at the mounting points on the center bolster. The wide mount provides stability during the dump cycle.



All specification are subject to change without notice. Trailers pictured in this brochure may feature optional equipment.



TRAIL KING industries

DUMP PRODUCTS

RD 5 Box 48 • Brookville, PA 15825 • 1-800-545-1549 • Fax: 814-849-5063 • www.trailking.com

ALL RIGHTS RESERVED TRAIL KING INDUSTRIES, INC. FORM SHRQ 1199-5