



# Steel Tub Dump Trailer



STEEL TUB DUMP TRAILER



# Steel Tub Dump Trailer



## Lightweight Strength, Dependable Performance



Integrated self-shedding top rail. Elliptical tub design provides added strength and eliminates crossmembers for weight savings.



The Steel Tub Dump trailer is reinforced in high stress areas to eliminate cracking.



Unitized doghouse design offers extra strength, and a 45° maximum dump angle ensures complete cleanout.



Lightweight, high strength fabricated subframe with full length longitudinals for maximum payload.



The 1/4" high-tensile fifth wheel plate with integrated crossbracing over the 5th wheel plate is engineered for rugged, sturdy, dependable operation.



Rugged steel upper coupler with integrated hoist mount.



Air-open/spring close bottom latch assembly with positive over-center mechanism for secure operation.



Optional apron with integrated push bumper. Various lengths and flip-up bumpers available.



Heavy duty overhung gate is standard. (Optional: High lift or 2-way side-swing gates.)



Trail King Steel Tub Dump trailers are engineered to deliver maximum payload, ultimate fuel mileage efficiency, and increased profitability. Excellent for hauling materials for several markets, including:

- Sand and gravel, crushed aggregate, stone, top soil, etc.
- Asphalt and Ready-Mix paving applications
- Demolition
- Rip Rap
- Crushed coal
- Broken concrete



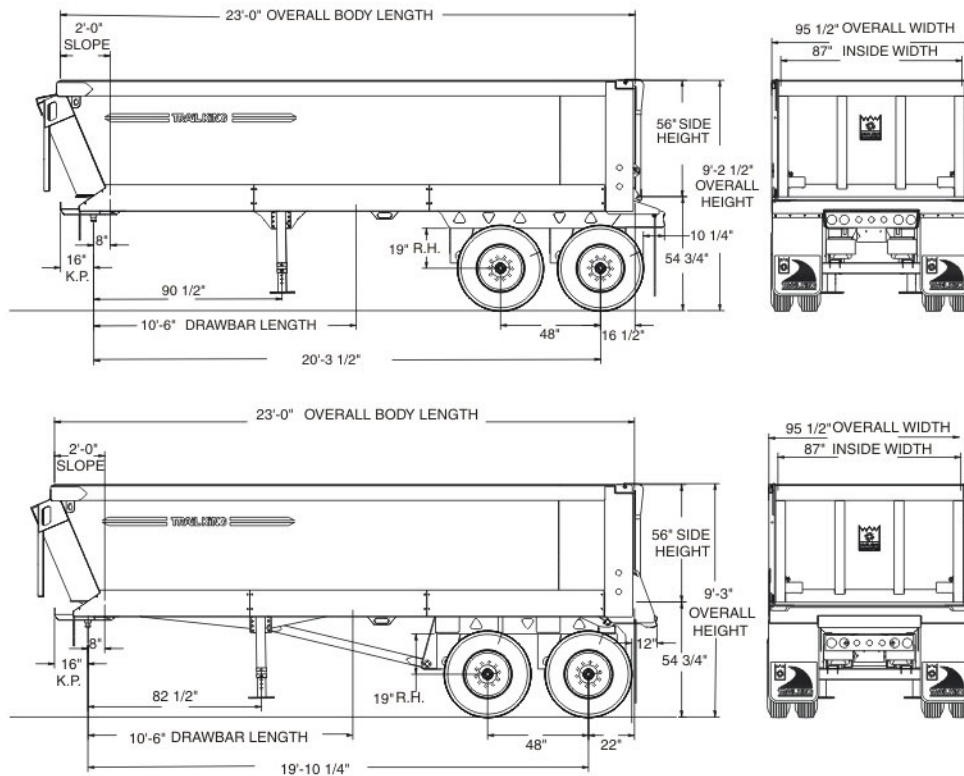
Frameless Steel Tub Dump Trailer



Quarter Frame Steel Tub Dump Trailer



# Steel Tub Dump Trailer



## STANDARD EQUIPMENT

### Chassis Group:

- 16" King Pin Setting
- 5/16" x 3" x 4" Steel Tubing
- Primary Drawbar
- 1/4" x 3" x 4" Steel Tubing
- Secondary Draw Bar
- Tandem Air Ride Suspension w/ Quick Disconnect Exhaust at 5th Wheel
- Fabricated Subframe Assembly
- 25,000# 5/8" Wall 71.5" Track Axles
- 7" Brakes
- \*2S1M ABS System
- Automatic Slack Adjusters
- 10-Hole Steel Hub-Piloted Hubs
- Outboard Cast Drums
- 10-Hole Steel Wheels
- 11R22.5 Radial Tires
- Non Load Bearing Stiff Legs

### Body Group:

- 3/16" 450 Hardox Body Sheet w/ 53" of Elliptical Floor
- 56" Side Height
- 1/4" Formed Top Rail
- Integrated Angle on Top
- Full Length Longitudinals
- Steel Fenders over Tandems
- Formed Rear Corner Post

### Bulkhead Group:

- Slope Nose Design
- 3/16" XF-80 Bulkhead
- Ladder, Street Side, Inside and Out
- 8" Upright Mounted Hoist Parallel with Bulkhead
- 108" Hydraulic Hose w/ Wing Fitting

### Tailgate Group:

- 3/16" 450 Hardox Tailgate Sheet
- 3-Panel Gate
- Integrated Angle on Top
- Flush Overhanging Hinges
- Air-Operated Over-Center Latch System w/Air Open/Spring Close
- 3/8" Short Spreader Chains w/ Basket

### Light Group:

- 2 Markers/Side
- Center Turn Signal w/ Marker Light
- Lights in Chassis Back Plate

### Flaps & Guards:

- Rubber Flaps & Rubber Guards

### Finishing Instructions:

- Conspicuity Tape
- 2-Part Polyurethane Paint

\*To meet 1997 Federal requirements, Trail King offers two variations of the anti-lock braking system. The minimum 2S1M system is available, but Trail King recommends the 4S2M system. All specifications are subject to change without notice. Trailers pictured in this brochure may feature optional equipment.

## Distributed by:



# TRAIL KING Industries

STEEL TUB DUMP TRAILER

A CARLISLE Company

P.O. Box 7064 ■ Mitchell, SD 57301 ■ 800-843-3324 U.S. & Canada ■ 605-996-6482 ■ Fax: 605-996-4727 ■ [www.trailking.com](http://www.trailking.com)

All rights reserved Trail King Industries, Inc. FORMTKSTED1/2007-2.5