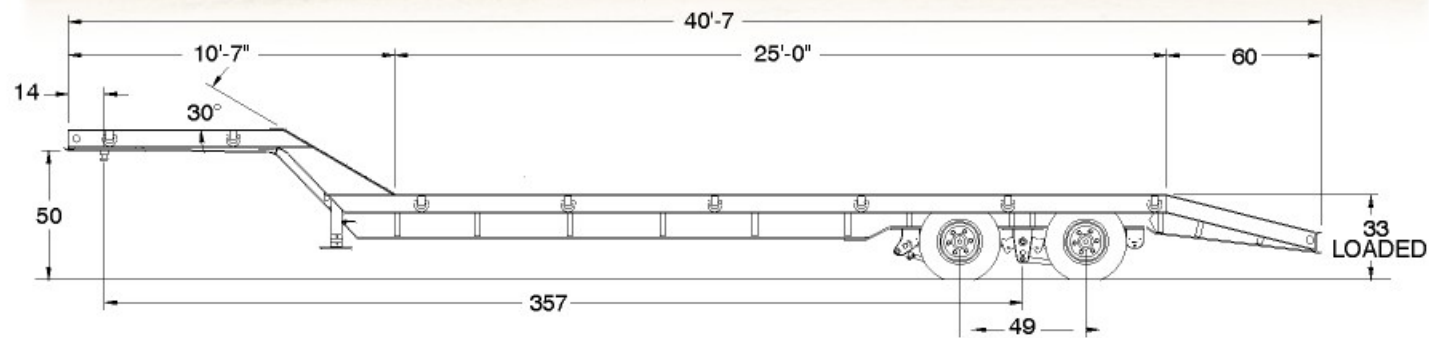


Construction TK50LP "Special" Tag Trailer



STANDARD EQUIPMENT

- 2- 20,000-lb axles
- 12 1/4" x 7 1/2" air brakes
- * Anti-lock brake system
- 235/75R 17.5 16-ply tires
- Disc wheels 8-hole pilot mount, dual rims
- Oil seals
- 1 1/2" oak decking
- 12 D-rings on main deck, 4 on upper deck
- 30' deck length (25' flatdeck - 5' beavertail)
- 4" I-beam crossmembers on 12" centers
- 10'7" full width upper deck
- Loaded 5th wheel height - 50"

- 30° slope to upper deck
- 1/4" floor plate on slope w/traction aids
- Pin-type park stands
- 33" loaded deck height
- Multi-leaf spring suspension
- 60" wood-filled ramps
- Automatic slack adjusters
- Rubber-mounted sealed beam lights and sealed electrical system
- Electrical system per ICC/ DOT regulations
- Registration holder
- Red and white conspicuity stripe
- Color: Trail King 2-part polyurethane paint

*To meet 1997 Federal requirements, Trail King offers two variations of the anti-lock braking system. The minimum 2S1M system is available, but Trail King recommends the 4S2M system.

All specifications are subject to change without notice. Trailers pictured in this brochure may feature optional equipment.

Distributed by:



TRAIL KING Industries

Construction

TK50LP "SPECIAL" TAG TRAILER



Construction

TK50LP "Special" Tag Trailer



Construction

TK50LP "SPECIAL" TAG TRAILER

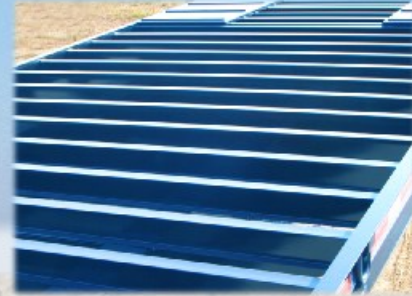
Construction TK50LP "Special" Tag Trailer... A Higher Standard of Excellence



Front Access Panel
The Trail King standard front access panel offers easy access for connecting hydraulic, air and electrical lines. The panel may also be opened for internal maintenance or repair simply by loosening four bolts.



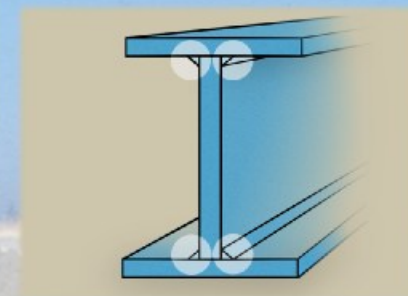
Full-Width Upper Deck
You can haul more equipment and distribute the weight of your loads more effectively thanks to the trailer's 8' long, full-width upper deck.



I-Beam Crossmembers
Crossmembers consist of 65,000-psi-yield 4" I-beams on 12" centers for maximum strength and deck life. No C-channel is used.



Oak Deck
Trail King tags are decked with 2" nominal oak decking, not pine, and double screwed to crossmembers to prevent cupping. As a result, your deck will stand up to years of rugged service.



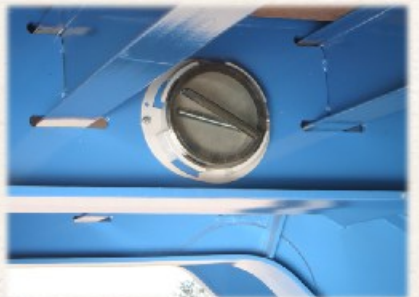
One-Piece Construction
Trail King I-beams are constructed of one-piece web and flange material and welded on all four sides to seal and protect the seams from rust. The result is an I-beam that is not only stronger... but one that is stronger longer.



Protected Electrical System
Trail King trailers feature rubber-mounted, shock-proof, sealed lights and rubber grommets wherever wiring runs through the frame for a longer, trouble-free, low-maintenance performance life.



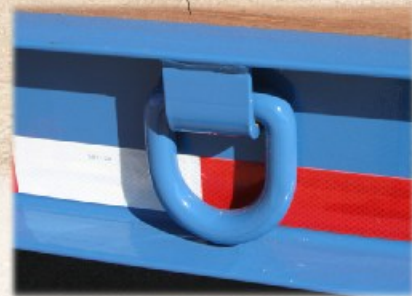
Reinforced Transition Area
Web stiffener rods and 3/8"-thick half-moon gussets reinforce the transition area of the gooseneck to ensure years of uncompromised strength and dependable performance in this critical area.



Registration Holder
Convenient, watertight, secure registration holder comes standard on Trail King tags, so you'll never have to worry about important registration items being damaged or misplaced.



Wrap-around Flange
Trail King I-beams feature a "wrap-around" flange at the transition area. This doubled steel offers more strength and durability than trailers featuring butt welds in this critical area.



Heavy-Duty D-Rings
Trail King includes heavy-duty 6" drop forged D-rings as standard equipment... not optional, as is the case with many manufacturers... so your tag is ready to handle even your toughest hauling requirements.



Axles, Wheels, And Tires
Truck-type axles and wheels, oil seal hubs, and radial tires are standard equipment. So you not only get the right equipment for the job, you also get less down time, easier maintenance, and long service life.



Formed Knee Braces
The unique "double break" design of Trail King's knee braces means more strength, less weight. And because they run the full depth of the I-beam and all the way to the outside rail, you get maximum load-bearing strength across the entire width of the trailer, even in the beavertail.



Lightweight Ramps
Lift one and see for yourself... Trail King self-supporting 60" ramps are lightweight, but strong. Choose from wood-filled or ladder-type, manual or spring assist models.