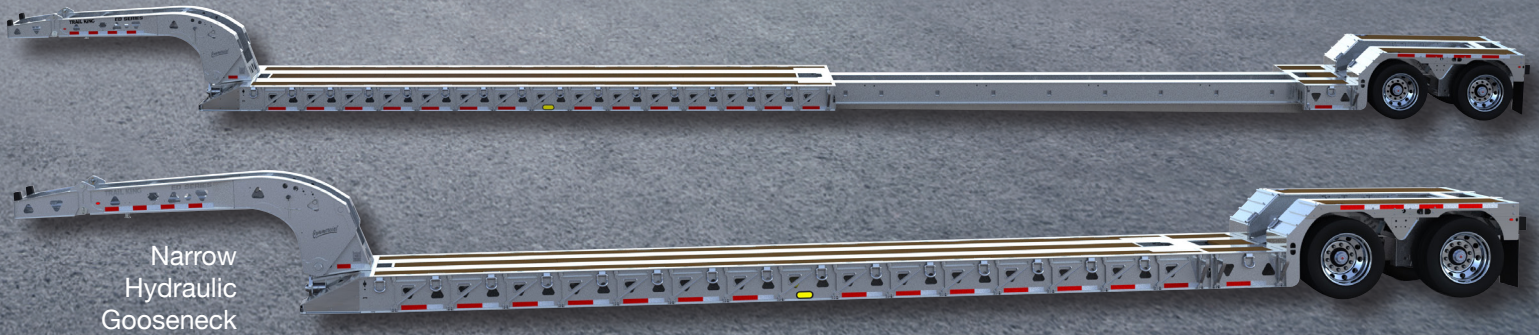




**OPEN-DECK
COMMERCIAL**

MECHANICAL - HYDRAULIC EXTENDABLE DOUBLE DROP TRAILER

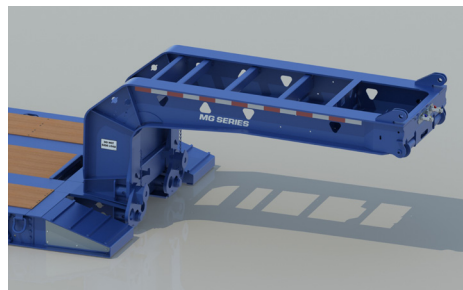


Narrow
Hydraulic
Gooseneck

Featuring Interchangeable Goosenecks!



Full-Width Mechanical Gooseneck
(Standard)



Narrow Mechanical Gooseneck



Full-Width Hydraulic Gooseneck
(Shown with optional flip neck)

Trail King's Commercial MED-HED Detachable Gooseneck Double Drop Extendable trailer comes loaded with the most standard equipment of any trailer of its kind on the market... as well as a variety of options, including lightweight, corrosion-resistant aluminum features.

Best of all, these trailers are engineered to accommodate four interchangeable gooseneck styles for the ultimate in hauling versatility.



Quick Coupler and Bulkhead Adaptors

Quick coupler air lines on the MED (hydraulic lines on HED) are attached to adaptors on the bulkhead of the deck. Electrical line features a replaceable jumper cable between the neck and the deck. Replacing damaged lines is easy and convenient.



Wheel Area with Mini-Boom Trough

Deeper mini-boom trough provides clearance for equipment with hitches. In addition to providing a convenient step for the operator, the removable plates provide easy access to axles. Traction aids and D-rings in transition area are standard.



OPTIONAL Aluminum Packages

Various "aluminum packages" are available for the gooseneck (full width only), main deck, and wheel area, including such things as aluminum I-beam or box beam cross members, outer rails, decking, and front and rear channels.

More Standard Features... More Versatility

MED - STANDARD EQUIPMENT	70MED	80MED	90MED 2-AXLE	90MED 3-AXLE
Capacity in 10' (closed)	50,000 lbs.	60,000 lbs.	70,000 lbs.	70,000 lbs.
Brackets and reinforcing for gooseneck flip		X	X	X
Loaded deck height with 6" of ground clearance	20"	22"	22"	22"
Overall length	47' 11"	52' 11"	52' 11"	52' 11"
Deck length (closed)	29' 0"	34' 0"	33' 9"	29' 2"
Deck length (extended)	49' 4"	59' 4"	58' 3"	49' 2"
Axle spacing	54.5"	54.5"	54.5"	54.5"
25,000 lb. capacity (5/8" wall) axles	2	2	2	3

ADDITIONAL MED STANDARD EQUIPMENT

49" loaded 5th wheel height

9'-10" long full width mechanical detachable gooseneck (82" swing)

Standard single position gooseneck stirrups

HED - STANDARD EQUIPMENT	80HED	90HED 2-AXLE	90HED 3-AXLE	110HED
Capacity in 10' (closed)	60,000 lbs.	70,000 lbs.	70,000 lbs.	90,000 lbs.
Overall length	52' 11"	52' 11"	52' 11"	52' 11"
Deck length (closed)	33' 9"	33' 9"	29' 2"	29' 2"
Deck length (extended)	59' 4"	58' 7"	49' 6"	49' 6"
Narrow commercial style hydraulic gooseneck	10' 2" (78" swing)	10' 2" (78" swing)	10' 2" (78" swing)	10' 2" (78" swing)
Flip gooseneck extension (110" swing)		32" (110" swing)	32" (110" swing)	32" (110" swing)
I-beam side channel with triangle cutouts	X	X	X	X
Bent style d-rings	8 pair	9 pair	8 pair	8 pair
I-beam cross members	X	X	X	X
Frame reinforced for single booster (or 2 flip axles), wood over wheels, 22.5 wheels			X	X
Axle spacing	54.5"	54.5"	54.5"	54.5"
25,000 lb. capacity (5/8" wall) axles	2	2	3	3
Air lift 3rd axle			X	X

ADDITIONAL HED STANDARD EQUIPMENT

50" loaded 5th wheel height
(5) 5th wheel height adjustments

Brackets for swingout outriggers
Mini boom trough in center of wheel area

One (1) pair of bent style D-rings in tail channel

STANDARD EQUIPMENT COMMON TO ALL MED AND HED MODELS

Double drop extendable deck
102" deck width
Extension stops, no more than 36" O.C.
Double box beam frame construction
Steel grease-able rollers
1-3/8" Apitong (flush) decking in main deck
34" stationary deck at rear of load deck
Multiple locations for connecting air and electrical to allow for extension of deck
Commercial style wood-filled wheel area decked with 1 1/8" Apitong decking (flush)
Brackets, air and electrical for additional axles

Air ride suspension
Raising and lowering for air ride
Adjustable ride height
Steel hubs with cast brake drums
Hub piloted 8.25 x 22.5 10-hole steel disc wheels
255/70R22.5 - HT 16 ply tires
Air brakes
Anti-lock brakes (4S2M ABS)
16.5 X 7 shoe type brakes (931-162 lining)
One piece oil seals
LED lights, 50 state legal
3rd Tail Light Package

Mid-turn signal/clearance light
Rubber mounted sealed lights and harness system
Liquid filled air gauge
Flag holders - 1 pair at front of load deck, 1 pair at side of deck split, and 1 pair at rear of trailer
Oversize load sign brackets
Mud flaps
Red and White conspicuity markings
Blasted and washed with phosphate solution prior to paint
2 part Polyurethane paint



Contract
GS-30F-004X



Contract
052015-TK1



TRAIL KING

DEPENDABLE PERFORMANCE. EVERY HAUL. EVERY DAY.

TrailKing.com/MED-HED

300 East Norway Ave. Mitchell, SD | 800-843-3324 | www.trailking.com

© 2017 Trail King Industries. All rights reserved.



a proud U.S. manufacturer